

## References:

1. Larsen JN, Ford A, Gjesing B, et al. The collaborative study of the international standard of dog, *Canis domesticus*, hair/dander extract. *J Allergy Clin Immunol* 1988; 82:318-330.
2. DeGroot H, Goei K, Van Sicter P, et al. Affinity purification of a major and minor allergen from dog extract: Serologic activity of affinity-purified Can f 1 and Can f 1-depleted extract. *J Allergy Clin Immunol* 1991; 87:1056-61.
3. Schou C, Hansen G, Linter T, et al. Assay for the major dog allergen, Can f 1 investigation of house dust samples and commercial dog extracts. *J Allergy Clin Immunol* 1992; 88:847-53.
4. Ingram JM, Sporik R, Rose G, Honsiger R, Chapman MD, Platts-Mills TAE. Quantitative assessment of exposure to dog (Can f 1) and cat (Fel d 1) allergens: Relationship to sensitization and asthma among children living in Los Alamos, New Mexico. *J Allergy Clin Immunol* 1995; 96:449-456.
5. Sporik RB, Ingram JM, Price W, Sussman JH, Honsiger RW, Platts-Mills TAE. Association of asthma with serum IgE and skin test reactivity to allergens among children living at high altitude: Tickling the dragon's breath. *Amer J Resp Crit Care Med* 1995; 151:1388-1392.



www.inbio.com

Indoor Biotechnologies, Inc.  
700 Harris Street,  
Charlottesville,  
VA 22903  
United States

Tel: (434) 984-2304  
Fax: (434) 984-2709  
E-mail: [mail@inbio.com](mailto:mail@inbio.com)

Indoor Biotechnologies Ltd.  
Cardiff Medicentre  
Heath Park  
Cardiff CF14 4UJ  
Wales

Tel: +44 (0) 2920 68 2115  
Fax: +44 (0) 2920 68 2044  
E-mail: [info@indoorbiotech.co.uk](mailto:info@indoorbiotech.co.uk)

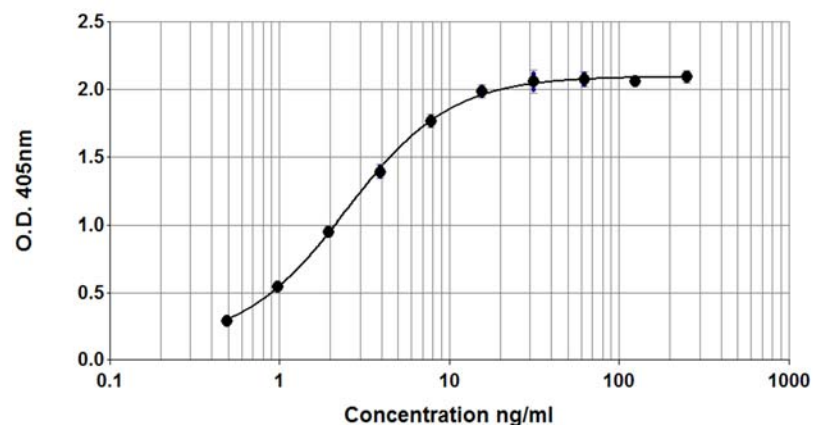


## Can f 1 ELISA kit (10D4/CF1)

Product Code: EL-CF1

Lot Number: xxxxx

### Sample Curve:



### Content:

- Vial 1 (red top) 100  $\mu$ L  
Monoclonal antibody 10D4  
Concentration: 1mg/ml in PBS
- Vial 2 (white top) 400  $\mu$ L  
Universal Allergen Standard  
Concentration: 2500ng/ml Can f 1
- Vial 3 (brown) 100  $\mu$ L  
Polyclonal rabbit antibody Can f 1  
Dilute: 1:1000 for use

**Storage: The ELISA kit should be stored at 4°C**

**For research and commercial use in vitro: not for human in vivo or therapeutic use.**

## Certificate of Analysis

Monoclonal Antibody: 10D4 (clone 10D4 C4 A10)  
 Immunogen: Can f 1  
 Isotype: Mouse IgG2ak  
 Specificity: Binds to an epitope on dog *Canis familiaris* allergen, Can f 1.  
 Purification: Produced in ascites and purified by affinity chromatography using Protein A. Single heavy and light chain bands on SDS-PAGE.  
 Concentration: 1.0mg/ml in phosphate buffered saline, pH 7.4. Based on A280 for IgG (1.42= 1mg/ml) 0.22µm filtered, preservative free.  
**Lot Number: xxxxx**

Antibody: Rabbit polyclonal antiserum  
 Immunogen: Dog fur extract  
 Isotype: Multiple  
 Specificity: The antiserum contains IgG antibodies to dog *Canis familiaris* allergen, Can f 1, as well as IgG antibodies to other dog allergens.  
 Activity: Titrated for use in ELISA at 1/1000 dilution. Prepared in 1% BSA/50% glycerol/PBS, pH 7.4, 0.22µm filtered, preservative free.  
**Lot Number: xxxxx**

Allergen Standard: Universal Allergen Standard  
 Composition: A formulation of eight purified natural allergens prepared in 1% BSA/50% glycerol PBS, pH 7.4.  
**Lot Number: xxxxx**

Concentration:

Universal Allergen Standard	Protein Measurement	Concentration (ng/ml)
Der p 1	Amino-acid analysis	2500
Der f 1	Amino-acid analysis	2500
Der p 2	Amino-acid analysis	1000
Fel d 1	Amino-acid analysis	1000
<b>Can f 1</b>	<b>Amino-acid analysis</b>	<b>2500</b>
Rat n 1	Amino-acid analysis	1000
Mus m 1	Amino-acid analysis	250
Bla g 2	Amino-acid analysis	2500

## ELISA Protocol for Can f 1.

- Coat polystyrene microtiter plates (NUNC Maxisorp Cert. NUNC catalog # 439454) with 100µl mAb 10D4 at 10µl/10ml, i.e. 1/1000 dilution of stock, in 50mM carbonate-bicarbonate buffer, pH 9.6, incubate overnight at 4°C.
- Wash wells 3x with PBS-0.05% Tween 20, pH 7.4 (PBS-T). Incubate for 30 min. at room temperature with 100µl/well of 1% BSA, PBS-T. Wash 3x with PBS-T.
- Use doubling dilutions of the Universal Allergen Standard to make a control curve ranging from 250 - 0.5ng/ml Can f 1: Pipette 20µl UAS into 180µl 1% BSA, PBS-T into wells A1 and B1 on the ELISA plate. Mix well and transfer 100µl across the plate into 100µl 1% BSA, PBS-T diluent to make 10 serial doubling dilutions. Wells A11, B11 and A12, B12 should contain only 1% BSA, PBS-T as blanks.
- Add 100µl of diluted allergen samples and incubate for 1 hour at room temperature. House dust extracts for Can f 1 analysis are routinely diluted two-fold from 1/10-1/80. Other sample types, like air filter extracts and allergen extracts, may require different dilutions.
- Wash wells 3x with PBS-T and add 100µl diluted polyclonal Rabbit anti Can f 1 antibody. The antibody solution contains 50% glycerol and should be diluted 1/1000 in 1%BSA, PBS-T. Incubate for 1 hour at room temperature.
- Wash wells 3x with PBS-T and add 100µl diluted Peroxidase conjugated Goat anti-Rabbit IgG (Jackson Laboratories Cat# 111-036-046, reconstituted in 1 ml distilled water and 1ml glycerol). The reconstituted Goat anti-Rabbit IgG should be diluted 1/1000 (i.e. 10µl/10ml) in 1% BSA, PBS-T. Incubate for 1hour at room temperature.
- Wash wells 3x and develop the assays by adding 100µl 1mM ABTS in 70mM citrate phosphate buffer, pH 4.2 and 1/1000 dilution of H<sub>2</sub>O<sub>2</sub>. Read the plate when the absorbance at 405nm reaches 2.0-2.4.

### Notes:

*Universal Allergen Standard is recommended for immunoassay calibration purposes only. Not recommended for in-vitro antibody measurements, T cell studies, immunization purposes, or other uses.*

*Buffer recipes, storage conditions and a list of frequently asked questions can be found under "Protocols" on our web site: [www.inbio.com](http://www.inbio.com).*

**For research and commercial use in vitro: not for human in vivo or therapeutic use.**